



Jessop Court, 2 Brindley Place, Uxbridge, UB8 2FA

- One Bedroom Apartment
- Canal Facing / Stunning Balcony
- Gated Development
- Allocated Parking & Lifts To All Floors
- Students Welcome
- Furnished
- High Specification
- Larger Than Average One Bedroom
- EPC Rating - B
- Available August 2025

£1,575 PCM

Cameron Estate Agents
195 High Street,
Middlesex, Uxbridge, UB8 1LB

E: uxbridge@cameron.co
T: 01895252000

www.cameron.co

arla | propertymark

PROTECTED

naea | propertymark

PROTECTED

Whilst every care has been taken to ensure the accuracy of these particulars, none of the statements contained herein are to be relied upon as representations of fact. These particulars do not constitute an offer or contract.

Decsription

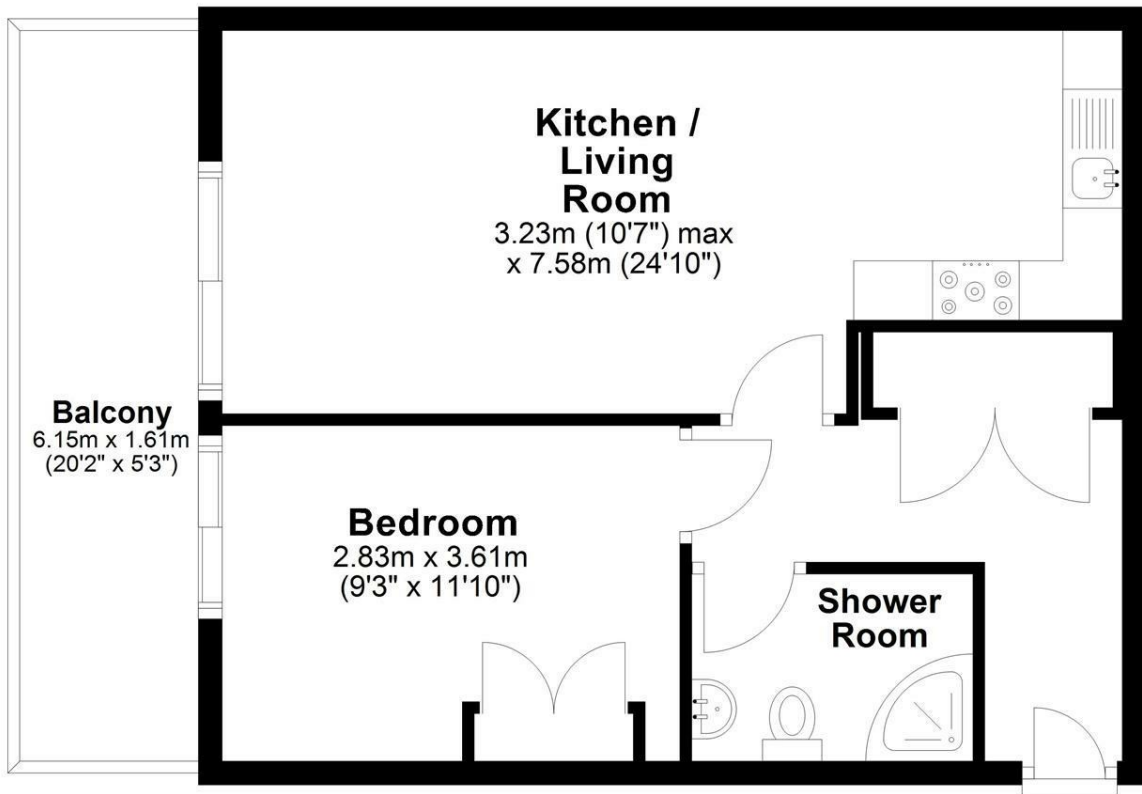
Offered to the market is this larger than average, one bedroom, canal facing apartment in the highly sought after development of Jessop Court. This property briefly comprises an entrance hall leading to utility cupboard, large bedroom with fitted wardrobes, fully fitted bathroom suite and a large kitchen / living room area with a balcony. Offered to the market furnished and available August 2025. 1 year contract, suitable for professionals.

IMPORTANT NOTICE

These particulars have been prepared upon information supplied by the Vendor and should be verified by your surveyors and solicitors. In accordance with the Property Misdescriptions Act 1991 we have prepared these sales particulars as a general guide to give a broad description of the property. They are not intended to constitute part of an offer or contract. We have not carried out a structural survey and the services, appliances and specific fittings have not been tested. All photographs, measurements, floor plans and distances referred to are given as a guide only and should not be relied upon for the purchase of carpets or any other fixtures or fittings. Lease details service charge and ground rent (where applicable) are given as a guide only and should be checked and confirmed by your solicitor prior to exchange of contract

Third Floor

Approx 640 sq ft (59.4 sq meter)



Approx 640 sq ft (59.4 sq meter)

Cameron



Whilst every care has been taken to ensure the accuracy of these particulars, none of the statements contained herein are to be relied upon as representations of fact. These particulars do not constitute an offer or contract.